



# Valley of the Sun Fainting Goat Show

## Directions to Ramona Jr. Fairgrounds from CA-58 East

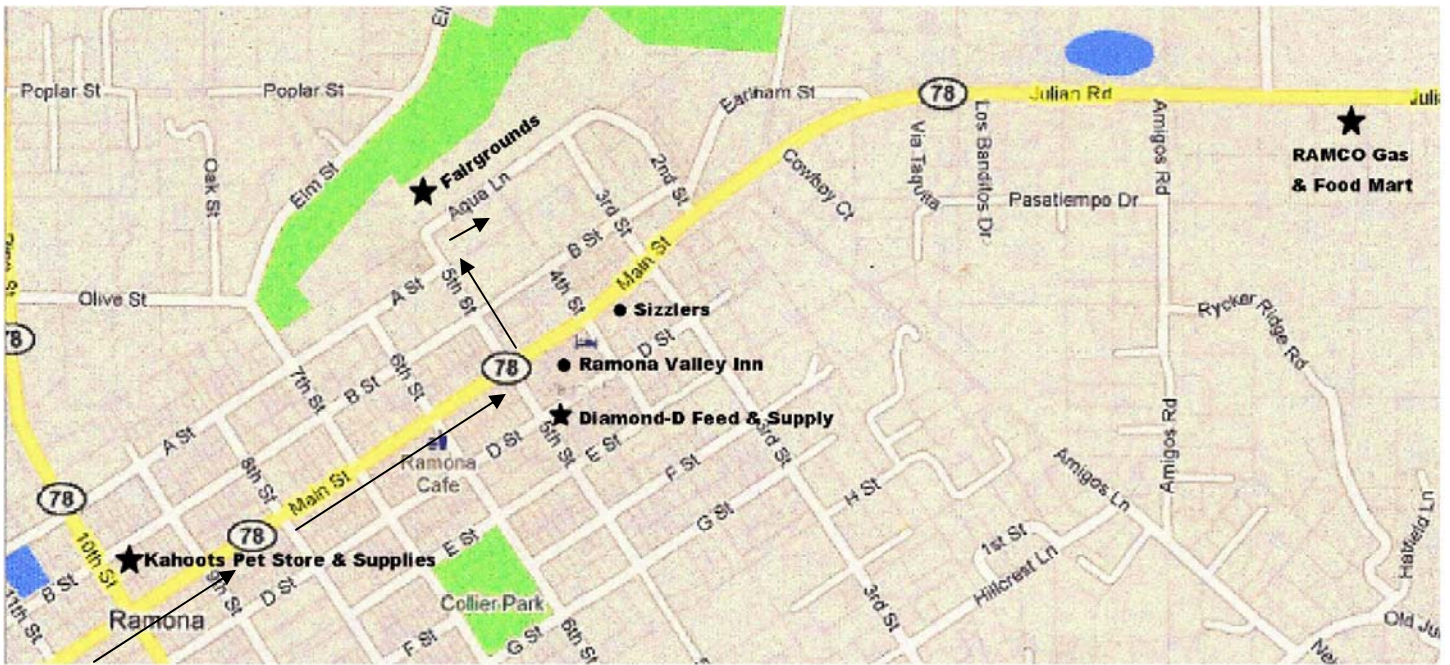
The following directions are recommended because a GPS will take you straight through Los Angeles/ Burbank/Hollywood which is not recommended due to severe traffic. The below directions will allow you to avoid LA.

		Directions	Nearest town to intersection	Miles
	1	Take <b>CA-58 E (towards Mojave/Tehachapi)</b>	Bakersfield	96.4 mi
	2	Take <b>US-395 S</b>		41.7 mi
	3	Take <b>I-15 S</b>	Riverside	91.3 mi
 Exit 32	4	Take <b>CA-78 East</b> towards Ramona	Escondido	1.5 mi
	5	Turn <b>right</b> at <b>N Broadway/State Route 78 E</b>		0.4 mi
	6	Turn <b>left</b> at <b>E Washington Ave</b>		1.0 mi
	7	Turn <b>right</b> at <b>N Ash St</b>		0.5 mi
	8	Continue onto <b>CA-78 E/San Pasqual Valley Rd</b>	<i>Winds up mountain</i>	16.2 mi
	9	Turn <b>left</b> at <b>Main Street/CA-78</b>	Ramona	0.5 mi
	10	Turn left at 5th Street.		0.2 mi
	11	Turn right at Aqua Lane. Fairground is on your left.		

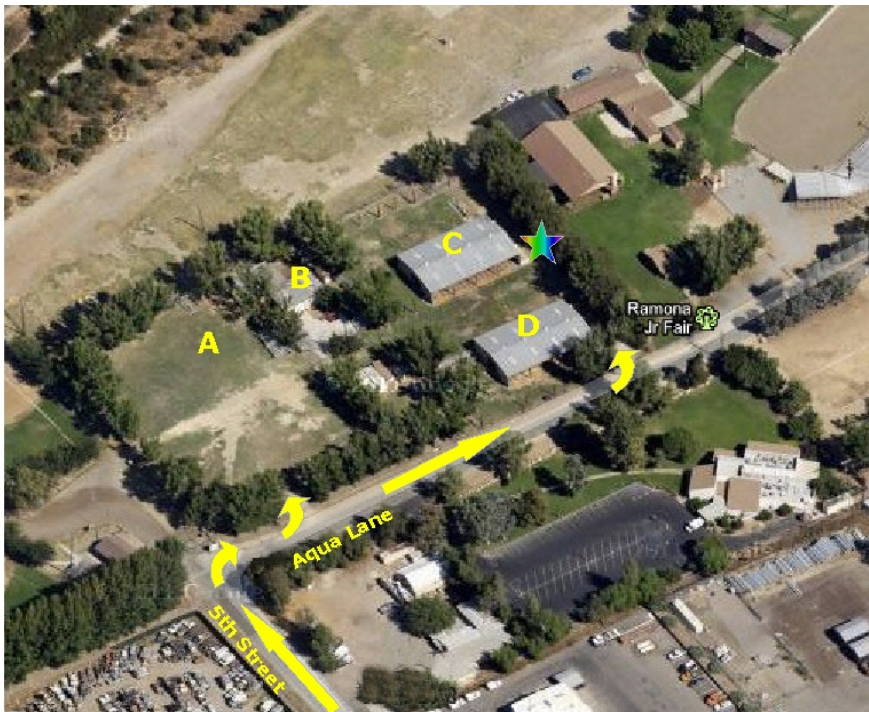


# Valley of the Sun Fainting Goat Show

## Ramona Area Map



## Jr. Fairgrounds Area Map



### Legend

- A = Camping Area
- B = Restrooms
- C = Goat Barn
- D = Show Barn
- ★ = Goat Loading/Unloading Zone