



Valley of the Sun Fainting Goat Show

Directions to Ramona Jr. Fairgrounds from I-5 South (Washington & Oregon)

The following directions are recommended because a GPS will take you straight through Los Angeles/ Burbank/Hollywood which is not recommended due to severe traffic. The below directions will allow you to avoid LA.

		Directions	Nearest town to intersection	Miles
	1	Take I-5 S		
	2	Take Exit 461 to merge onto CA-120 E (towards Manteca/Sonora)*		6.4 mi
	3	Take Exit 6 to merge onto CA-99 (towards Modesto/Fresno)		217 mi
	4	Take CA-58 E (towards Mojave/Tehachapi)	Bakersfield	96.4 mi
	5	Take US-395 S		41.7 mi
	6	Take I-15 S**		117.5 mi
	7	Take Exit 22 for Camino Del Norte***	Escondido/ Rancho Bernardo	0.3 mi
	8	Turn left at Camino Del Norte		1.6 mi
	9	Camino Del Norte becomes Twin Peaks Rd	Poway	2.6 mi
	10	Turn right at Espola Rd****		0.8 mi
	11	Turn left at Poway Rd		2.6 mi
	12	Turn left at CA-67 N		9.2 mi
	13	Continue straight through town (CA-67 becomes CA-78/Main Street)	Ramona	0.5 mi
	14	Turn left at 5th Street.		0.2 mi
	15	Turn right at Aqua Lane. Fairground is on your left.		

* We do not recommend taking the I-80 to cut over to CA-99. We have found that continuing on I-5 until Exit 461 (CA-120) takes you around the heart of Sacramento instead of through it.

** GPS will want you to cut off of the I-15 to take I-215 and then back to I-15. Just stay on I-15 and do not take I-215. I-215 is not a pleasant freeway.

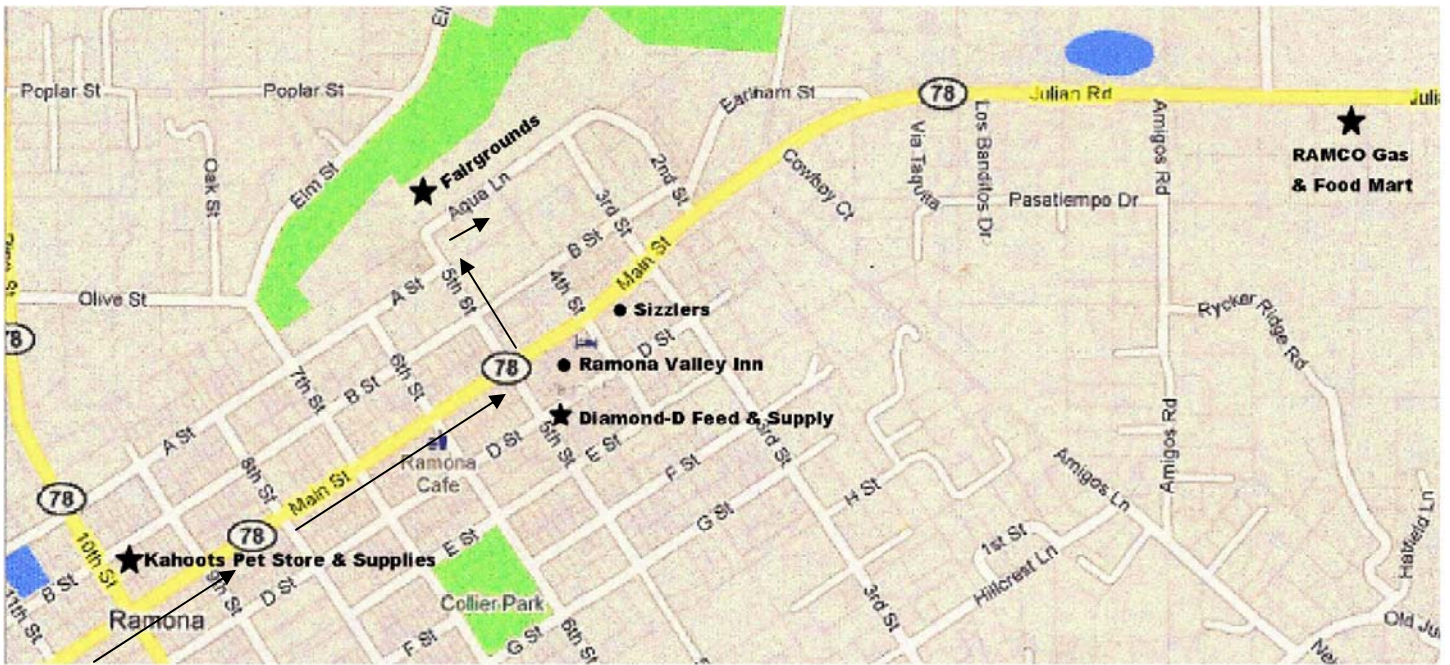
*** GPS will want you to get off of the I-15 at CA-78. CA-78 is a very steep mountain road that twists and winds up the mountain and we do not recommend it if pulling a trailer. Going further down I-15 will allow you to come over the mountain at a more trailer friendly place (less steep and a much shorter distance for the incline).

**** Espola Rd is near the end of Twin Peaks Road. You will go through several stop lights. When you pass Community Road, then Midway, you are only about 2-3 stop lights away. There will be a little gas station and strip mall on the right side corner with a donut shop and liquor store.

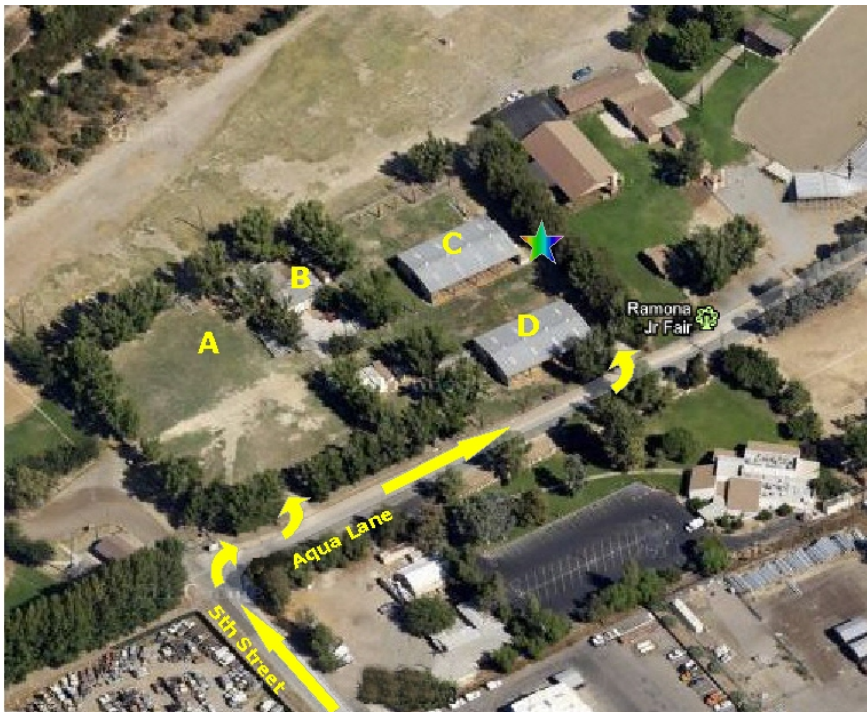


Valley of the Sun Fainting Goat Show

Ramona Area Map



Jr. Fairgrounds Area Map



Legend

- A = Camping Area
- B = Restrooms
- C = Goat Barn
- D = Show Barn
- ★ = Goat Loading/Unloading Zone